

## Aerospace Applications

### LANDING GEAR COMPONENT REPAIR



Selective Plating Is Approved For Use By:

- |                              |                                  |
|------------------------------|----------------------------------|
| <b>Boeing</b>                | BAC 5854<br>BAC 5849             |
| <b>Goodrich Landing Gear</b> | LGPS 1102<br>PS 13113            |
| <b>McDonnell Douglas</b>     | DPS 9.89                         |
| <b>Messier Dowty</b>         | PCS 2141<br>PCS 2144<br>PCS 2143 |

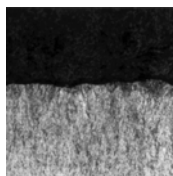


Selective plating is an approved process that can significantly **reduce your turnaround time** when you need nickel plating on localized areas for dimensional restoration or for prebrazing coating. Whether you have an occasional need or your operation involves large volumes of parts, SIFCO provides flexible alternatives for your finishing needs.

- Complete customized automated equipment packages
- Turnkey surface enhancement services
- On-site outsourcing program
- Technical support

### Nickel Sulfamate Meets The Performance Requirements Of: AMS 2451, AMS 2403 and AMS 2424

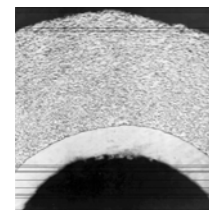
Deposit Characteristics	
Structure	Fibrous, columnar, dense
Hardness	250HV (22 Rc)
Taber wear	52 mg/1000 cycles
Adhesion (tensile bond)	>10,080 psi
Shear load	48,700 psi
Compressive yield	118,500 psi
Ductility	Excellent
Stress	<15,000
Heat resistance	700°F for 23 hrs.



**Nickel Sulfamate  
AMS 2451**



**Tensile Bond**



**Comprehensive Bend**