

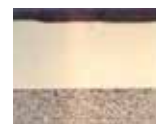
SIFCO Process saves chemical plants time and money in maintenance turnarounds!

The SIFCO Process for selective electroplating is very useful in helping chemical and petrochemical plants execute fast, efficient, and cost-effective maintenance turnarounds.



By utilizing the SIFCO Process, maintenance engineers, planners, and general contractors can repair pumps, motors, flanges, valves, and other components on-site by applying metal to the components without the heat or distortion of welding or flame-spraying, and many times plating to-size without post-machining. The SIFCO Process is a portable process, plating up to 100 metals and alloys without the use of tanks. It allows you to rebuild shafts and stems that are worn or pitted, in many instances without complete disassembly. Electric motor end-bells and can be re-sized quickly and easily usually without post-machining so it is faster than sleeving. Corroded flanges can be filled and capped with a more corrosion resistant material without removing the flange. Wear rings can be coated with a metal that is more wear-resistant thereby increasing the component's useful life.

The process is up to 60 times faster than tank plating, so rapid metal build-ups are achievable. And because the process is true electrolytic plating, the metallic bond is atomic in nature, resulting in adhesion superior to processes such as flame spraying.



The SIFCO Process has been used in chemical plants on various process components resulting in significant savings versus other repair methods or replacement. Here is just a sample of the savings that can be achieved:

PART	SIFCO PROCESS REPAIR COST	LESS OF NEW COST OR OTHER REPAIR	SAVINGS
Bearing Adaptor BA301	\$300	\$700	\$400
Sleeve CA304/305	\$300	\$1,100	\$800
Bearing Housing Impact Mill	\$100	\$1,000	\$900
Bearing Housing	\$50	\$1,000	\$950
Shaft AG201B	\$300	\$653	\$353
Piston Rods Unit 1	\$600	\$5,822	\$5,222
Sleeve CA101	\$300	\$700	\$400
Bearing Adaptor CA101	\$300	\$700	\$400
Assembly Plate 79655	\$275	\$631	\$356
Wear Plate 79656	\$275	\$1,075	\$800
Bearing Adaptor BA502	\$200	\$600	\$400
BA204 Gear Box High Speed	\$150	\$1,500	\$1,350
DG301 Shafts (2)	\$800	\$1,850	\$1,050
Impact Mill Shafts #1 (3ea.)	\$800	\$5,550	\$4,750
Impact Mill Shafts #2	\$200	\$2,500	\$2,300

We can sell you the equipment, supplies, and in-depth training so you or your contractors can use the SIFCO Process to effect repairs right at the plant. SIFCO can also provide experienced service technicians to do the work for you either on-site at the plant, or at one of our 6 service shops around the U.S.

SIFCO is interested in hearing from you if you think the SIFCO Process might help you meet some of the challenges you face in maintaining your plant. Please don't hesitate to contact us at 216-524-0099 or at our website at <http://www.sifcoasc.com>.