

# AeroShield® 4025

## AEROSHIELD® 4025

SIFCO ASC is continuously developing and refining new deposits and coatings, providing the highest quality surface enhancement materials to meet industry's ever changing requirements.

SIFCO ASC has developed a process to selectively brush plate a cobalt metal matrix composite in which chromium carbide particles are incorporated. SIFCO ASC's AeroShield® is an adherent, ductile, dense, non-porous deposit that provides high temperature oxidation protection with superior wear resistance that can be improved by heat treating.

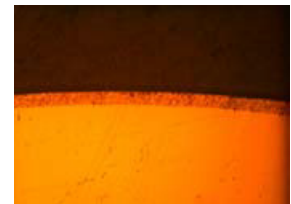
## APPLICATIONS

For OEM or dimensional repair applications that require the enhancement of localized areas to improve surface properties including hardness, and wear resistance in high temperature applications.

Property	Unit	Brush Plated AeroShield®	Electrodeposited Chromium
Cr3C2	Wt. %	10-50	-
Uniformity	Wt. %	±3	-
Particle Size	µm	1-5	-
Microhardness	VHN	360-500	800-1200
Hardness Change After 400 °C Exposure	%	> + 10%	790
Taber Wear Index	µg/CYCLE	8	3-6
Taber Wear After 400 °C Exposure	µg/CYCLE	4	-
Surface Finish as Deposited, Ra	µm	0.5 - 1.5	-

## WHY USE AEROSHIELD® 4025?

- ▶ Superior wear resistance
- ▶ Machinable
- ▶ High temperature oxidation protection



## US Headquarters

5708 E Schaaf Road  
Independence, Ohio 44131, USA

**T** +1 800 765 4131

+1 216 524 0099

**F** +1 216 524 6331

**E** info@sifcoasc.com